

Exensys Software Solutions Ltd.		AA/B/CCDD V x.y
White Paper		W. E. F. dd/mm/yy



**Best Practice**  
**eXensys – Corrective Maintenance**

Exensys Software Solutions Ltd.		AA/B/CCDD V x.y
White Paper		W. E. F. dd/mm/yy

## Table of Contents

**Introduction:** ..... 3

**Overview:**..... 3

**Benefits:**..... 4

**Conclusion:** ..... 5



Exensys Software Solutions Ltd.		AA/B/CCDD V x.y
White Paper		W. E. F. dd/mm/yy

## Introduction:

Corrective maintenance can be defined as the maintenance which is required when an item has failed or worn out, to bring it back to working order. Corrective Maintenance activity may consist of repair, restoration or replacement of equipment. This activity will be the result of regular inspection, which identifies the failure in time for corrective maintenance to be planned and scheduled, then performed during a routine maintenance shutdown.

## Overview:

The idle time for production machines in a factory is mainly due to the following reasons:

- Lack of materials
- Machine fitting, cleaning, tools replacement etc.
- Breakdowns

Taking into consideration only breakdown idle time it can be split in some components:

Operator's inspection time - That is the time required by the machine operator to check the machine in order to detect the breakdown reason, before calling the Maintenance department.

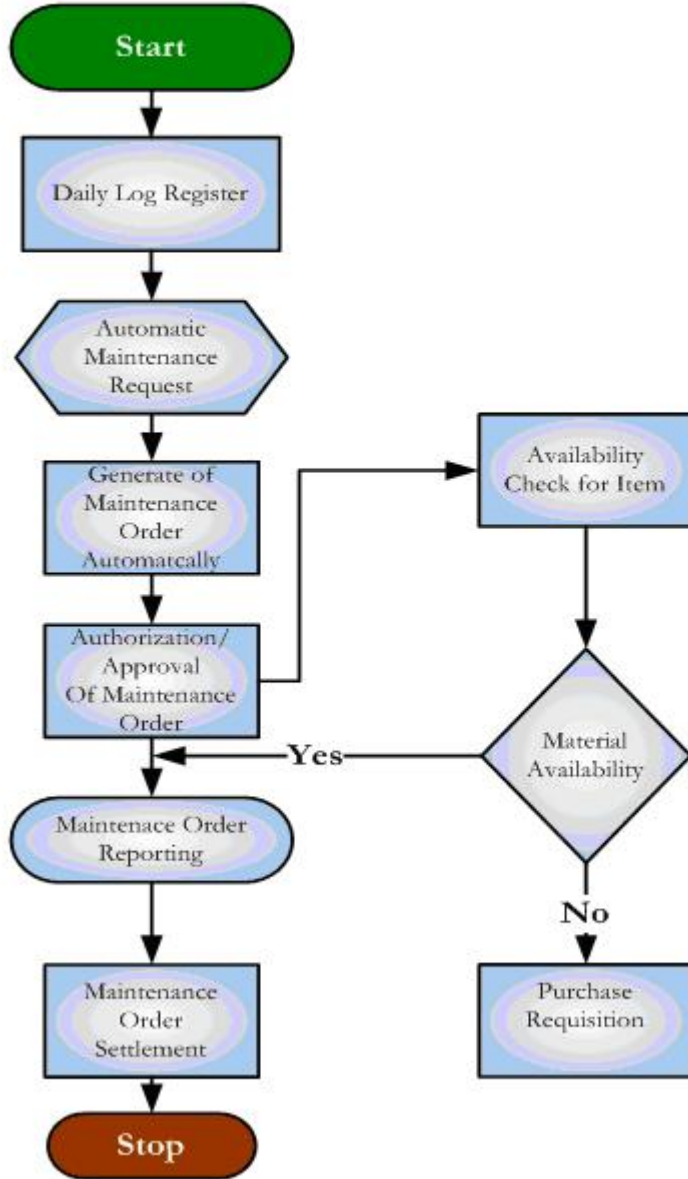
Maintenance dead time - Time lost by machine operator waiting for the machine to be repair by maintenance personnel, from the time they start doing it until the moment they finish their task.

In the corrective environment the system has been conceived to reduce the breakdown detection and diagnosis times and supply the adequate information required to perform the repairing operations.

## How Corrective Maintenance is carried out in eXensys Application:

Corrective maintenance is used only when a problem is observed or reported in daily log register or through Maintenance request. Corrective and breakdown type Maintenance orders are used for corrective maintenance. The process is initiated by capturing observations made for a machine on daily basis in a daily log register. Based on the observations made maintenance request is created automatically. To execute the request maintenance order is raised. After Approval of the same material availability check is done for the required items in the inventory, if the materials are available maintenance is carried out and they are reported on MOR (Maintenance Order Report). If materials are not available then purchase requisition is raised for the required materials. Once maintenance is completed settlement is done and the maintenance order is closed.

### Corrective Maintenance



#### Benefits:

- Streamlined Maintenance management Processes
- Increased Productivity
- Reduced Operating Costs

Exensys Software Solutions Ltd.		AA/B/CCDD V x.y
White Paper		W. E. F. dd/mm/yy

**Conclusion:**

Effective plant maintenance management ensures maximum availability of plant machinery which in turn, results in increased production of quality products and their timely delivery to customers.

